



The WildLab mobile phone application lets you log your bird sightings with date, time, latitude, longitude, and more. Whether you are an educator new to mobile phones, or a birder looking to log sightings, this short guide will familiarize you with the WildLab's technologies and curricula.

OVERVIEW OF THE WILDLAB APP

Get started by signing up for an account at <http://thewildlab.org>. After confirming your account via email, you will be ready to log your sightings from your iPhone!

After downloading the application from the iTunes app store and installing it on your device, press the WildLab icon to launch the WildLab application. The first screen is the login screen, where you enter the username and password you chose when you signed up.

After logging in, the first screen you see is the habitat screen.

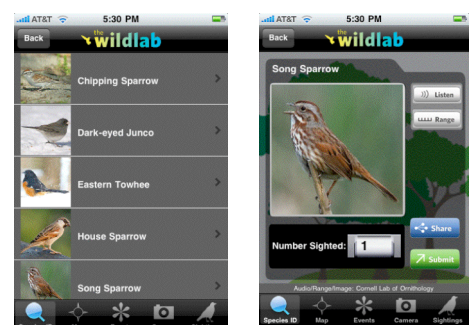


SPECIES ID

If you already know the bird species, use the “Quick Entry” button to enter your sighting. Start typing a name, and a list of North American bird names appears. The more you type, the shorter the list. Select the name, enter the number sighted, and press submit. Your sighting will be added to your account.

If you need help with an identification, select the habitat corresponding to the one you are in. Next, select a shape that most closely corresponds to the bird in question. The silhouettes are not necessarily representative of the actual ratios of sizes, since the bird species in each category can vary greatly in size.

After selecting habitat and shape, the application will display a list of common species. If no picture matches the bird you see, you can always press the “Back” button and try another shape. When you click on a species, a larger photo appears.

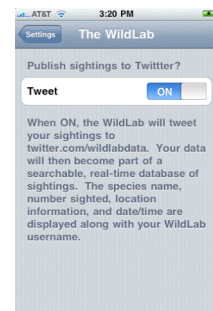


Also, to make sure the bird is correct, listen to the song and look at its range. If this is the bird, enter the number sighted and press “submit.” If you would like to share your



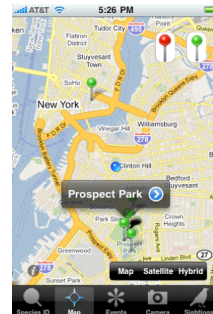
sighting with your friends on Facebook, press “share” and sign into your Facebook account via Facebook Connect.

Sightings are also “tweeted” in real-time to the WildLabData Twitter account. The account is a real-time log of species, abundance, and location data from WildLab users. Your personal information is not associated with the sightings. You can turn this off or on by going to “Settings” on your phone and switching your Twitter feed preference.



MAP

The Map tab shows your sightings on a map. Tap the red pin in the upper right to see your hotspots, and select any red pin to see a list of sightings associated with that location. Tap the green pin in the upper right to see eBird hotspots, and select any green pin to see eBird sightings associated with that hotspot. The blue dot represents your current location.



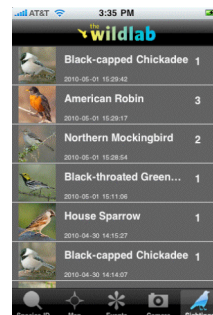
EVENT

The Event tab shows events you created online. For instance, a fieldtrip could be categorized as an event, and multiple WildLab users could join the event, even if they were not birding in the same areas. By tapping on an event, more information is provided about the events and the event list can be emailed to friends or shared with birding list-serves.



SIGHTINGS

The Sightings tab shows your sightings made on the phone. Tapping on a sighting will show a map with the location of the sighting. Also, if you make a sighting and there is no service, the sighting will be tagged with a submit button; press submit to save once the phone regains service. The location saved is the last known location; you can adjust the location online. When you update the application, this list is cleared; remember, your sightings are always available on the WildLab.org Web site.





WILDLAB WEB SITE

You can view your sightings on the Web site by logging in with your username and password. You will be taken to your profile page, where your sightings are listed.

Profile Events [Hi, BSCS](#) [Manage My Account](#) | [My Profile](#) | [Sign Out](#)

BSCS

My Upcoming Events

BSCS Spring Workshop 8
05/12/2010 10:15 AM

My Past Events

BSCS Spring Workshop 7
04/21/2010 10:45 AM

BSCS Spring Workshop 6
04/20/2010 11:30 AM

BSCS Spring Workshop 5
04/14/2010 10:45 AM

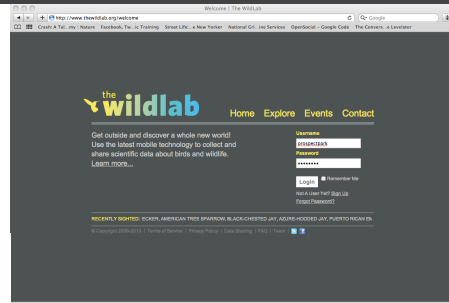
[CREATE NEW EVENT](#)

Profile [Export as CSV](#)

All Sightings **Event Sightings**

Select Device: Data Range from to [SUBMIT](#)

	MAP	SPECIES NAME	LOCATION	TIME	SIGHTED	EDIT/DEL
		Common Grackle	Terrace Bridge, Brooklyn, NY 11218, USA	04/21/10 11:55 AM	1	EDIT DEL
		Common Grackle	Terrace Bridge, Brooklyn, NY 11218, USA	04/21/10 11:51 AM	1	EDIT DEL
		Canada Goose	W Lake Dr, Brooklyn, NY 11218, USA	04/21/10 11:45 AM	2	EDIT DEL
		Canada Goose	W Lake Dr, Brooklyn, NY 11218, USA	04/21/10 11:31 AM	1	EDIT DEL
		Canada Goose	S Lake Dr, Brooklyn, NY 11218, USA	04/21/10 11:30 AM	1	EDIT DEL
		Canada Goose	S Lake Dr, Brooklyn, NY 11218, USA	04/21/10 11:24 AM	13	EDIT DEL



PROFILE

This is the main page. On the left are upcoming events. Past events, with associated event sightings, are accessible by going to the “Events” tab. Select “Create New Event” to set up a new one. By clicking on the map, you can see sighting details and locations, edit past sightings, and enter new ones.

Your sightings are under the blue bar. You can sort each column by clicking on the header.

Clicking on the hummingbird icon will show a sighting on the map. You can also edit and delete sightings. The “Event Sightings” tab displays sightings associated with events.

The fields themselves can be hidden or displayed by clicking on “Fields” and selecting the categories you would like to have displayed.

“Select Device” refers to accounts with multiple devices. If you run a class or workshop with people using multiple devices, you can view sightings for each device individually. To utilize this feature, go to “Manage My Account” and enter the device ID for each device (starting under WEB ID). Device IDs can be viewed via iTunes, by clicking on the serial number.

In the blue bar, there is an option to create a CSV (comma separated value) file; this file can be uploaded to [Cornell’s eBird Web site](#) and will include whatever sightings are selected. Enter a specific date range to capture specific sightings in the CSV file, or select an event.